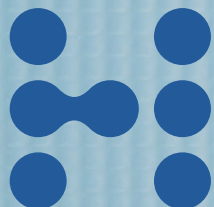
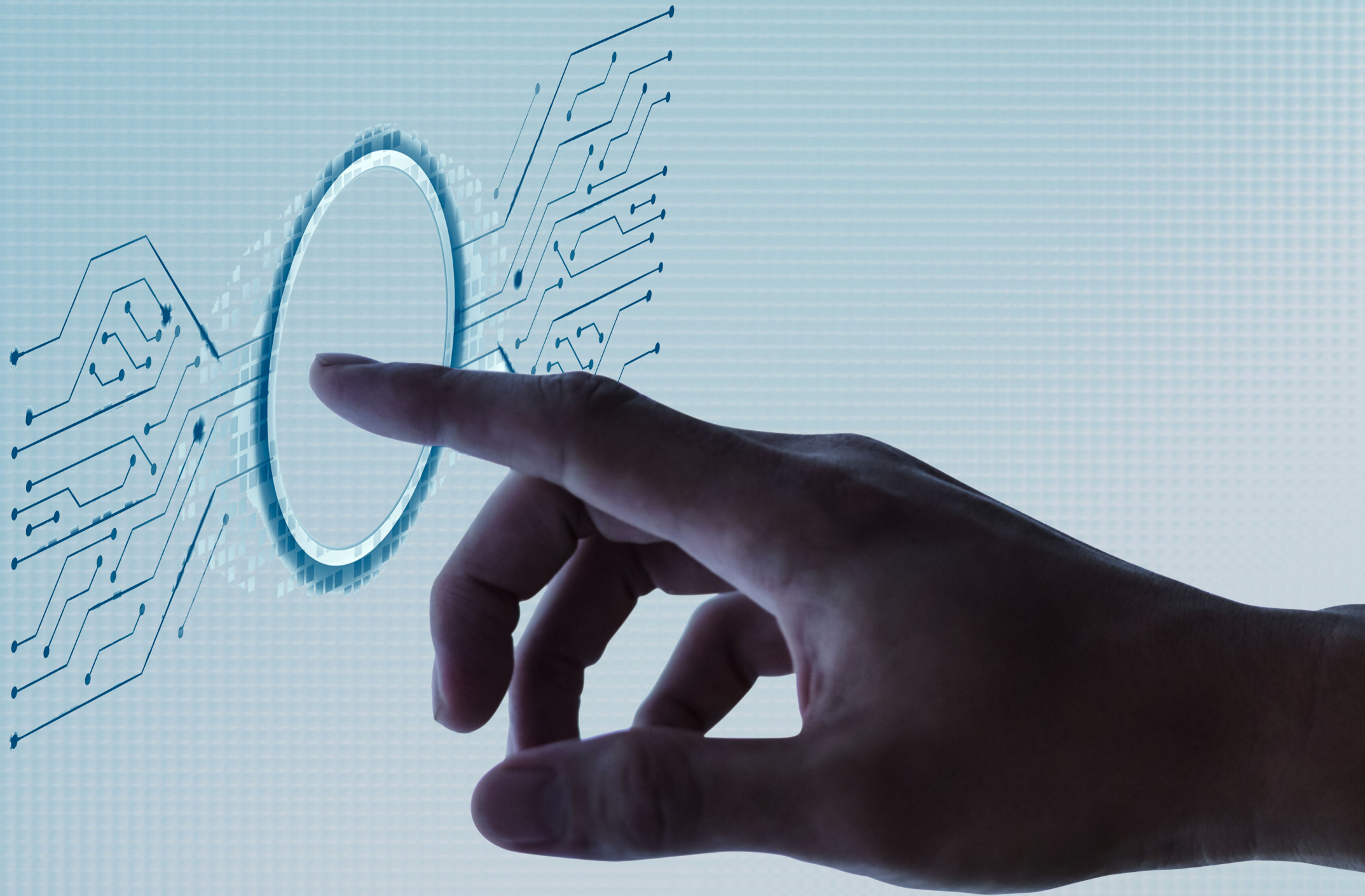


# Handshakes

## FACTSHEET

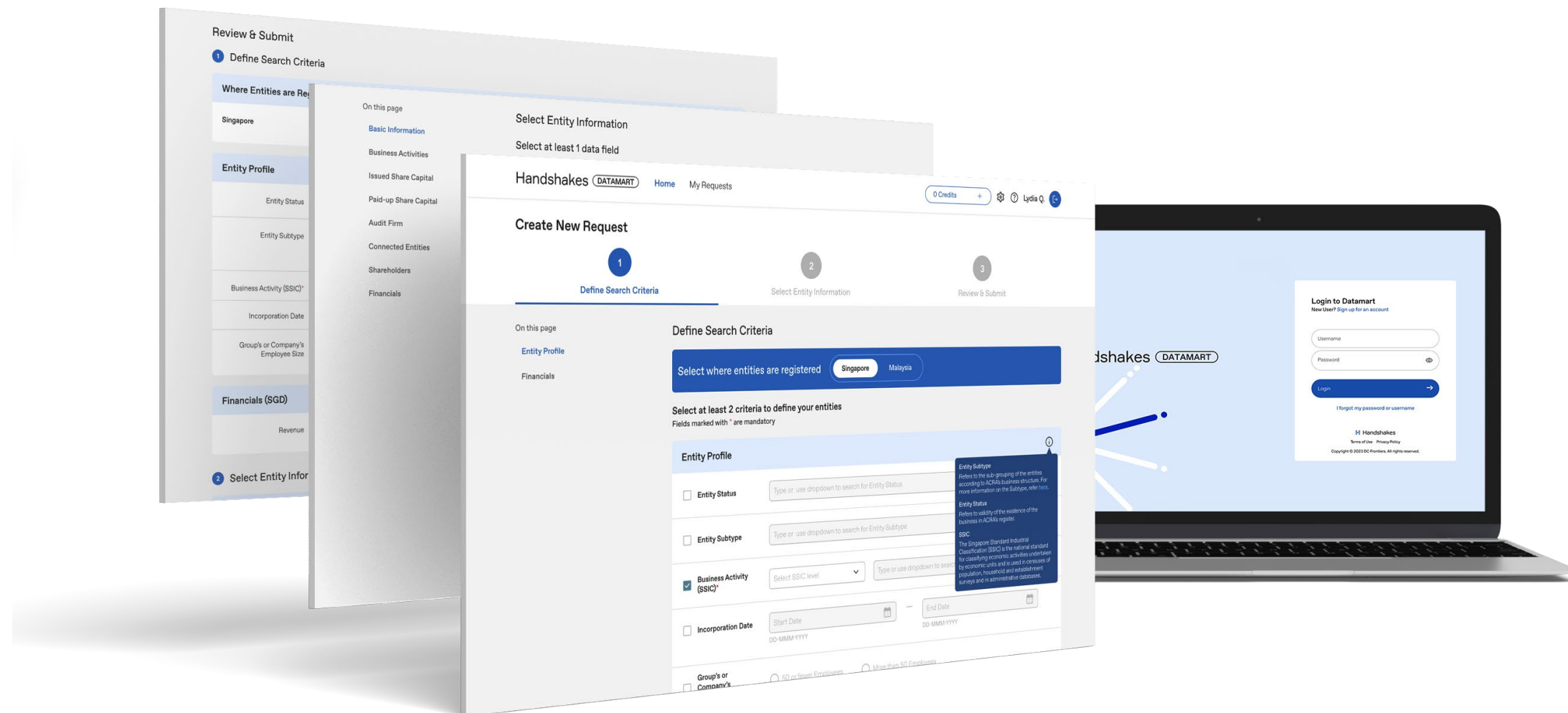
**DATAMART**





# Self-service corporate data at your fingertips

Official registry data of over 4.6 million companies and businesses across Singapore and Malaysia

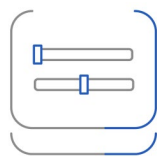


# Our core offerings for users to perform actions with ease.



## Official Data Sources

- Corporate registry of Singapore and Malaysia
- Licensed ACRA data partner



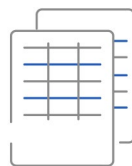
## Highly Customisable Search Criteria

- Easy filtering and segmenting
- Up to 13 different search criteria



## Self-Service at your Convenience

- Access data at any time of the day
- Account setup within one working day
- Instant self top-up credits



## Wide Selection of up to 70 Data Points

- Company basic registration details
- Shareholding information
- Appointment information
- Company financials



## Quick and Easy Access

- Report available in 10 minutes
- Output in CSV format



## Targeted Results

- Select data points of your choice
- Get specific data in granular form



# This user-friendly platform serves to deliver targeted corporate data to improve business intelligence.

## Key benefits:

### 1 Latest Data

Updated daily from ACRA

### 2 First Mover Advantage

Identify opportunities ahead of competitors

### 3 Time & Cost Savings

Data on-demand 24/7  
Buy only what you need

## Suitable for:



### Business Development

- Lead Generation
- Prospecting
- Customer Relationship Management



### Research

- Industry Insights
- Competitor Analysis
- Reports & Recommendation



### Business Analytics

- Benchmarking
- Financial & Risk Scoring
- Trend Spotting



Use Case	Lead Generation	Industry Insights	Business Intelligence
<b>Customer Needs</b>	The <b>business development team</b> of a major telecommunications company in Singapore would like to identify newly incorporated companies promptly for early customer outreach	The <b>corporate strategy team</b> of a major agriculture company in Malaysia would like to discover trends and monitor changes in the industry	A <b>government agency</b> in Singapore would like to identify and perform analysis on all SMEs incorporated in the last 10 years in tech industry
<b>Search Criteria</b>	Live <b>Singapore-registered companies</b> incorporated every month in all industries	All <b>Malaysia-registered companies</b> in agriculture industry	All <b>Singapore-registered companies</b> in technology industry with revenue < 50M SGD
<b>Data Points</b>	<ul style="list-style-type: none"> <li>• Basic Information</li> <li>• Connected Entities</li> <li>• Issued Share Capital</li> <li>• Paid-up Share Capital</li> <li>• Shareholders</li> </ul>	<ul style="list-style-type: none"> <li>• Basic Information</li> <li>• Connected Entities</li> <li>• Shareholders</li> <li>• Financials</li> </ul>	<ul style="list-style-type: none"> <li>• Basic Information</li> <li>• Connected Entities</li> <li>• Financials</li> </ul>



# Search Criteria for Singapore Corporate Registry Dataset

#	Search Criteria			
1	Entity Status	<b>Live</b> <ul style="list-style-type: none"> <li>Live</li> <li>LIVE (Receiver Or Receiver And Manager Appointed)</li> <li>Live Company</li> <li>Live LLP</li> <li>Live LP</li> <li>Live PAF</li> </ul>	<b>Non - Live</b> <ul style="list-style-type: none"> <li>Amalgamated</li> <li>Cancelled</li> <li>Cancelled (Non Renewal)</li> <li>Cancelled (Non-Renewal)</li> <li>Ceased Registration</li> <li>Ceased Registration (Transferred To Singapore)</li> <li>Converted To LLP</li> <li>Dissolved</li> <li>Dissolved – Compulsory Winding Up</li> <li>Dissolved – Compulsory Winding Up (Insolvency)</li> <li>Dissolved – Creditors' Voluntary Winding Up</li> <li>Dissolved – Members' Voluntary Winding Up</li> <li>Dissolved – Partners' Voluntary Winding Up</li> <li>Dissolved - Simplified Winding Up</li> <li>Dissolved (Foreign Co)</li> <li>Dissolved-Pursuant To Section 212(1)(D) Of The Companies Act</li> <li>Removed (Applied To Be Revoked)</li> <li>Removed (Dissolved)</li> <li>Struck Off</li> <li>Struck Off - Early Dissolution</li> <li>Struck Off - Early Dissolution (Simplified Winding Up)</li> <li>Terminated</li> </ul>	<b>Others</b> <ul style="list-style-type: none"> <li>Cancellation In Progress</li> <li>In Liquidation – Compulsory Winding Up</li> <li>In Liquidation – Compulsory Winding Up (Insolvency)</li> <li>In Liquidation – Creditors' Voluntary Winding Up</li> <li>In Liquidation – Members' Voluntary Winding Up</li> <li>In Liquidation – Partners' Voluntary Winding Up</li> <li>In Liquidation – Simplified Winding Up</li> <li>In Liquidation (Foreign Co)</li> <li>Registration Expired And Has Not Been Renewed</li> <li>Suspended</li> <li>To Be Ceased</li> <li>Under Judicial Management</li> <li>Gazetted To Be Struck Off</li> </ul>
2	Entity Subtype	Including all applicable subtypes of Companies, Partnerships and other types of businesses		
3	Business Activity	<ul style="list-style-type: none"> <li>Both Industry and Activity follow <a href="#">SSIC 2020</a></li> <li>Industries are corresponding to SSIC “Sections”</li> <li>Activities are corresponding to SSIC “Sub-class” or 5-digit codes</li> </ul>		
4	Incorporation Date	Inclusive date range		



# Search Criteria for Singapore Corporate Registry Dataset

#	Search Criteria	
5	Group's or Company's Employee Size	Only applicable for companies which file financials – those who do not file financials do not have this indicator
6 to 11	<b>Financials</b> <ul style="list-style-type: none"><li>• Revenue</li><li>• Profit or Loss before Tax</li><li>• Profit or Loss after Tax</li><li>• Total Assets</li><li>• Total Liabilities</li><li>• Total Equity</li></ul>	<ul style="list-style-type: none"><li>• In SGD; both negative and positive values are accepted</li><li>• Inclusive ranges (Minimum and/or Maximum values)</li><li>• Only applicable for companies which file financials – those who do not file financials will not appear in the results</li><li>• As long as either group-level or company-level figures meet the search criteria, the entities will be included in the results</li></ul>



# Entity Information available for Singapore Corporate Registry Data

Basic Information	Business Activities	Issued Share Capital	Paid-up Share Capital
<ul style="list-style-type: none"> <li>Entity Name</li> <li>Former Name</li> <li>Registration Number (UEN)</li> <li>Incorporation Date</li> <li>Entity Subtype</li> <li>Entity Status</li> <li>Previous Status and Status Date</li> <li>Registered Office Address</li> </ul>	<ul style="list-style-type: none"> <li>Primary SSIC Code</li> <li>Primary Business Description</li> <li>Secondary SSIC Code</li> <li>Secondary Business Description</li> </ul>	<ul style="list-style-type: none"> <li>Issued Share Category</li> <li>Issued Share Amount</li> <li>Number of Issued Shares</li> <li>Currency of Issued Shares</li> <li>Issued Share Type</li> </ul>	<ul style="list-style-type: none"> <li>Paid-up Share Category</li> <li>Paid-up Share Amount</li> <li>Currency of Paid-up Shares</li> <li>Paid-up Share Type</li> </ul>
Audit Firm	Shareholders	Financials	
<ul style="list-style-type: none"> <li>Audit Firm</li> </ul>	<ul style="list-style-type: none"> <li>Name of Shareholder</li> <li>Share Type</li> <li>Currency of Shares</li> <li>Number of Shares allotted to Shareholder</li> <li>Share Allotment Date</li> </ul>	<b>Filing Information</b> <ul style="list-style-type: none"> <li>Financial Period End Date</li> <li>Indicator: Group's or Company's Account</li> <li>Indicator: Group or Company has more than 50 Employees</li> <li>Currency of Financial Statements</li> </ul> <b>Independent Auditor's Report</b> <ul style="list-style-type: none"> <li>Independent Auditors' Report Date</li> <li>Indicator: Whether There is Emphasis of Matter in Independent Auditors' Report</li> <li>Indicator: Whether Emphasis of Matter is Only Due to Matters relating to Going Concern</li> </ul> <b>Statement of Financial Position (Balance Sheet)</b> <ul style="list-style-type: none"> <li>Total Assets</li> <li>Total Current Assets</li> </ul>	<ul style="list-style-type: none"> <li>Total Liabilities</li> <li>Total Current Liabilities</li> <li>Total Equity</li> <li>Accumulated Profits or Losses</li> </ul> <b>Income Statement</b> <ul style="list-style-type: none"> <li>Revenue</li> <li>Finance Costs</li> <li>Profit or Loss before Tax</li> <li>Profit or Loss from Discontinued Operations</li> <li>Profit or Loss after Tax</li> </ul> <b>Statement of Cash Flows</b> <ul style="list-style-type: none"> <li>Cash Flow from Operating Activities</li> <li>Cash Flow from Investing Activities</li> <li>Cash Flow from Financing Activities</li> </ul>
Connected Entities			
<ul style="list-style-type: none"> <li>Name of Connection</li> <li>Registration number of Connection (For Corporate Connections only)</li> <li>Address of Connection</li> <li>Description of Relationship</li> <li>Relationship Start Date</li> <li>Relationship End Date</li> </ul>			

Certain information may not be applicable to or available for all Entities, subject to data availability at official sources.





Singapore Corporate Registry Dataset

Sample Report

DATAMART Factsheet

Handshakes

DATAMART

Home

My Requests

72770 Credits

Lydia Q.

My Requests

>

01H524YCRGNP9KS04TAYTKWNQQ

01H524YCRGNP9KS04TAYTKWNQQ

Completed

Date Created: 11 Jul 2023

1

Define Search Criteria

Where Entities are Registered

Singapore

Entity Profile

Business Activity (SSIC)\* 01111 - Growing of leafy and fruit vegetables

Financials

Revenue

Min value 0.00

2

Select Entity Information

Basic Information

Entity Name

Registration Number (UEN)

Shareholders

Name of Shareholder

Financials

Statement of Cash Flows

Cash Flow from Operating Activities

Handshakes

Terms of Use

Privacy Policy

Copyright © 2023 DC Frontiers. All rights reserved.

Sample input for Singapore Corporate Registry Dataset

	A	B	C	D	E	F
1	active_name	company_regi	shareholder_name	cashflow_opr_act	group_cashflow_opr_act	to_sgd_forex_rate
2	OKVUZXG RTMSKGHEMPZF ULDSRI	844697700Y				1
3	EUPBVFM QYXAUC QHN. RIF.	055290689Q				1
4	LYQZJ ODIIBI QHN. RIF.	066926942H				1
5	AZHL FLDQGD QHN. RIF.	332188285S				1
6	XHJ FYLCMZJNT & QGAUAOB QH	814724661F				1
7	ISAPBP RTMD-HOBFLSF DSYK QHN.	572858636I			2134883	1
8	ALSK QHN. RIF.	559477647T		-840435		1
9	SRXEO FZCT TIOBQRRZS QHN. RIF.	556520054Q		-274262		1
10	OEYXNHY QHN. RIF.	304001425O		-35164		1
11	JAS HJROBF QHN. RIF.	316193408I		-28520		1
12	BFJUAF RTHZ VZOTUIN ZIKRFE	869455409D		-21828		1
13	ODIIB RBJHSN FZCMC HOBFLSF QH	011558679O		-11368		1
14	XCHG GEQKF FZCT QHN RIF	695224999K		-9494		1
15	DHR MQFSG - DUQO FZCMC (R) Q	920761850D		-2854		1
16	CNDXT (TIOBQRRZS) QHN. RIF.	801496871L		-1260		1
17	FZCT JPT TAXXXNQBDUB QHN. RI	392552677J		-360		1
18	B FZCT QHN. RIF.	733950735E		0		1
19	NRVKHTMF KGHOATFKJ QHN. ZIKF	868752740L		0		1
20	HT ODIUBOSRT ECUZOCZHYRZ QH	130389589G		5338		1
21	TQOOAH HNLESB NXTJ QHN. RIF.	768405934K		77568		1
22	AFRSIA FVLRBSJBOD QHN. RIF.	103095918Q		176720		1
23	YJT OLPJAKJOD OXZMSAVHYM QHN	699486733F		367719		1
24	ODIIB MQQHZOO QHN. RIF.	869595232O		558541		1
25	CEQ FCJ TAXXXNQQSI FZCT QHN RI	863805988H		1178986		1
26	ODIIB MQQHZOO QHN. RIF.	869595232O	CEQ FCJ TAXXXNQQSI FZCT Q	558541		1
27	CNDXT (TIOBQRRZS) QHN. RIF.	801496871L	CG MEVJ OFVR	-1260		1
28	LYQZJ ODIIBI QHN. RIF.	066926942H	DA ECUZOCZHYM HZBDGOQS QHN. RIF.			1

Sample report in CSV format



# Search Criteria for Malaysia Corporate Registry Dataset

#	Search Criteria			
1	Entity Status	Exist	Winding Up	Dissolved / Removed / Ceased Business <ul style="list-style-type: none"> <li>Dissolved</li> <li>Dissolved Conversion to LLP</li> <li>Removed</li> <li>Ceased Business</li> </ul>
2	Entity Subtype	Including all applicable subtypes of Companies, Partnerships and other types of businesses		
3	Business Activity	Free text search (Business Activity filed by companies can be in English or Malay)		
4	Incorporation Date	Inclusive date range		
5	Financials <ul style="list-style-type: none"> <li>Revenue</li> <li>Profit or Loss after Tax</li> <li>Total Assets</li> <li>Total Liabilities</li> <li>Total Equity</li> </ul>	<ul style="list-style-type: none"> <li>In MYR; both negative and positive values are accepted</li> <li>Inclusive ranges (Minimum and/or Maximum values)</li> <li>Only applicable for companies which file financials – those who do not file financials will not appear in results</li> <li>As long as either group-level or company-level figures meet the search criteria, the entities will be included in the results</li> </ul>		



# Entity Information available for Malaysia Corporate Registry Data

Basic Information	Business Activities	Connected Entities	Shareholders
<ul style="list-style-type: none"> <li>Entity Name</li> <li>Former Name</li> <li>Registration Number (UEN)</li> <li>Incorporation Date</li> <li>Entity Subtype</li> <li>Entity Status</li> <li>Previous Status and Status Date</li> <li>Registered Office Address</li> </ul>	<ul style="list-style-type: none"> <li>Primary Business Description</li> <li>Secondary Business Description</li> </ul>	<ul style="list-style-type: none"> <li>Name of Connection</li> <li>Registration number of Connection (For Corporate Connections only)</li> <li>Address of Connection</li> <li>Description of Relationship</li> <li>Relationship Start Date</li> <li>Relationship End Date</li> </ul>	<ul style="list-style-type: none"> <li>Name of Shareholder</li> <li>Currency of Shares</li> <li>Number of Shares allotted to Shareholder</li> <li>Share Allotment Date</li> </ul>
Financials			
<b>Filing Information</b> <ul style="list-style-type: none"> <li>Financial Period End Date</li> <li>Indicator: Group's or Company's Account</li> <li>Currency of Financial Statements</li> </ul>	<b>Statement of Financial Position (Balance Sheet)</b> <ul style="list-style-type: none"> <li>Total Assets</li> <li>Total Liabilities</li> <li>Total Equity</li> </ul>	<b>Income Statement</b> <ul style="list-style-type: none"> <li>Revenue</li> <li>Profit or Loss after Tax</li> </ul>	

Certain information may not be applicable to or available for all Entities, subject to data availability at official sources.



Malaysia Corporate Registry Dataset

Sample Report

DATAMART Factsheet

Handshakes

DATAMART

Home

My Requests

72770 Credits

Lydia Q.

My Requests > 01H52524Y0Z1F0GF9765SZHQ75

01H52524Y0Z1F0GF9765SZHQ75

Date Created: 11 Jul 2023

Completed

1 Define Search Criteria

Where Entities are Registered

Malaysia

Entity Profile

Business Activity Description: hair salon

Financials

Revenue: Min value 0.00

2 Select Entity Information

Basic Information

Entity Name

Shareholders

Name of Shareholder

Financials

Income Statement

Revenue

Profit or Loss after Tax

Handshakes

Terms of Use

Privacy Policy

Copyright © 2023 DC Frontiers. All rights reserved.

Sample input for Malaysia Corporate Registry Dataset

MY_20230711_125750					
active_name					
	A	B	C	D	E
1	active_name	shareholder_name	revenue	profit_loss_aft_tax	
2	RELAX ZONE SPA & WELLNESS SDN. BHD.		0	-773587	
3	M HAIR & SPA SDN. BHD.		0	-350680	
4	ISUS JVC INDUSTRIES SDN. BHD.		0	-196343	
5	MANISMAM SDN. BHD.		0	-637589	
6	LULLABE POSTNATAL & WELLNESS SDN. BHD.		0	-155149	
7	ERGO DESIGN SDN. BHD.		0	-500263	
8	EMINENT REFLEXOLOGY (BDO) SDN. BHD.		0	-94654	
9	TEN WA FAMILY SPA & REFLEXOLOGY SDN. BHD.		0	-3585353	
10	KAKI-KAKI REFLEXOLOGY (SUNGAI BESI) SDN. BHD.		0	-139859	
11	DAUN SEGAR SDN. BHD.		0	-70879	
12	ISH SALON SDN. BHD.		0	-190545	
13	SUPREME PROTOCOL SDN. BHD.		0	-186439	
14	STEPHANIEC ESTHETICS CENTER SDN. BHD.		0	-99431	
15	KAKI-KAKI REFLEXOLOGY (TAMAN NUSA BESTARI 3) SDN. BHD.		0	-69469	
16	LONGDA CAR BEAUTICIAN SDN. BHD.		0	-92712	
17	TRIO HAIR STUDIO SDN BHD		0	-89557.98	
18	CHAN LIEW ENTERPRISE SDN. BHD.		0	-60300	
19	PRINZ GLOBAL HEALTH SDN. BHD.		0	-82421	
20	KP MIDAS SDN. BHD.		0	-76664	
21	MY HAIR CUT SDN. BHD.		0	-71810	
22	TY ORO SDN. BHD.		0	-67287	
23	RAPELLEZ SDN. BHD.		0	-62189.95	
24	MONDE BEAUTE & AESTHETICS SDN. BHD.		0	47302	

Sample report in CSV format





# Get started in 3 simple steps

Create your account for free and start using DATAMART.  
Easily get quotation and download data that matches your needs.

1

## Submit Request

Sign up for an Account.  
Create New Request. Submit.

2

## Get Quotation

Receive an email within minutes.  
Add credits when necessary.

3

## Download Data

Pay and download report.  
Unlimited download for 30 days.

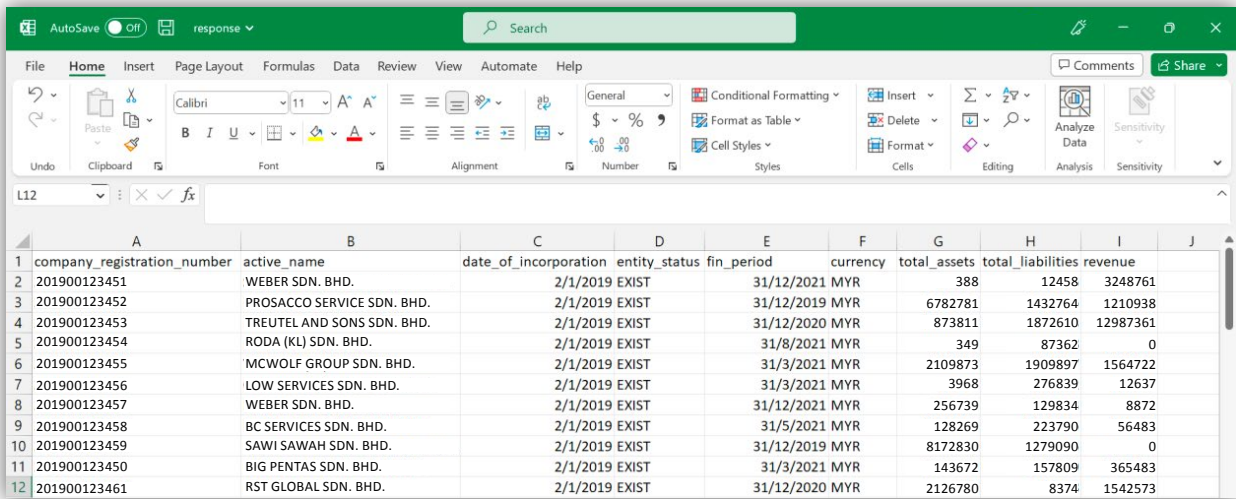


# DATAMART is also available on Handshakes API

Designed to empower users with easy access to business data, the Handshakes DATAMART is a self-query solution that serves to generate key corporate and financial information from our database. From industry specific searches to queries on business entities or individuals, the tool scans through our wealth of database to display a detailed list of output based on the search criteria.

```
{
  "dataset": "CRMY",
  "input": {
    "and": [
      {
        "criteria": "2",
        "parameters": [
          {
            "Entity_Id": [
              "200203152441"
            ]
          }
        ]
      },
      {
        "criteria": "1",
        "parameters": [
          {
            "isActive": true
          }
        ]
      }
    ]
  },
  "output": [
    "company_registration_number",
    "active_name"
  ]
}
```

Sample input



	A	B	C	D	E	F	G	H	I	J
1	company_registration_number	active_name	date_of_incorporation	entity_status	fin_period	currency	total_assets	total_liabilities	revenue	
2	201900123451	WEBER SDN. BHD.	2/1/2019	EXIST	31/12/2021	MYR	388	12458	3248761	
3	201900123452	PROSACCO SERVICE SDN. BHD.	2/1/2019	EXIST	31/12/2019	MYR	6782781	1432764	1210938	
4	201900123453	TREUTEL AND SONS SDN. BHD.	2/1/2019	EXIST	31/12/2020	MYR	873811	1872610	12987361	
5	201900123454	RODA (KL) SDN. BHD.	2/1/2019	EXIST	31/8/2021	MYR	349	87362	0	
6	201900123455	MCWOLF GROUP SDN. BHD.	2/1/2019	EXIST	31/3/2021	MYR	2109873	1909897	1564722	
7	201900123456	LOW SERVICES SDN. BHD.	2/1/2019	EXIST	31/3/2021	MYR	3968	276839	12637	
8	201900123457	WEBER SDN. BHD.	2/1/2019	EXIST	31/12/2021	MYR	256739	129834	8872	
9	201900123458	BC SERVICES SDN. BHD.	2/1/2019	EXIST	31/5/2021	MYR	128269	223790	56483	
10	201900123459	SAWI SAWAH SDN. BHD.	2/1/2019	EXIST	31/12/2019	MYR	8172830	1279090	0	
11	201900123450	BIG PENTAS SDN. BHD.	2/1/2019	EXIST	31/3/2021	MYR	143672	157809	365483	
12	201900123461	RST GLOBAL SDN. BHD.	2/1/2019	EXIST	31/12/2020	MYR	2126780	8374	1542573	

Sample output file (CSV format)



# Handshakes

For more details on our product,  
contact us at

[enquiries@handshakes.com.sg](mailto:enquiries@handshakes.com.sg)

